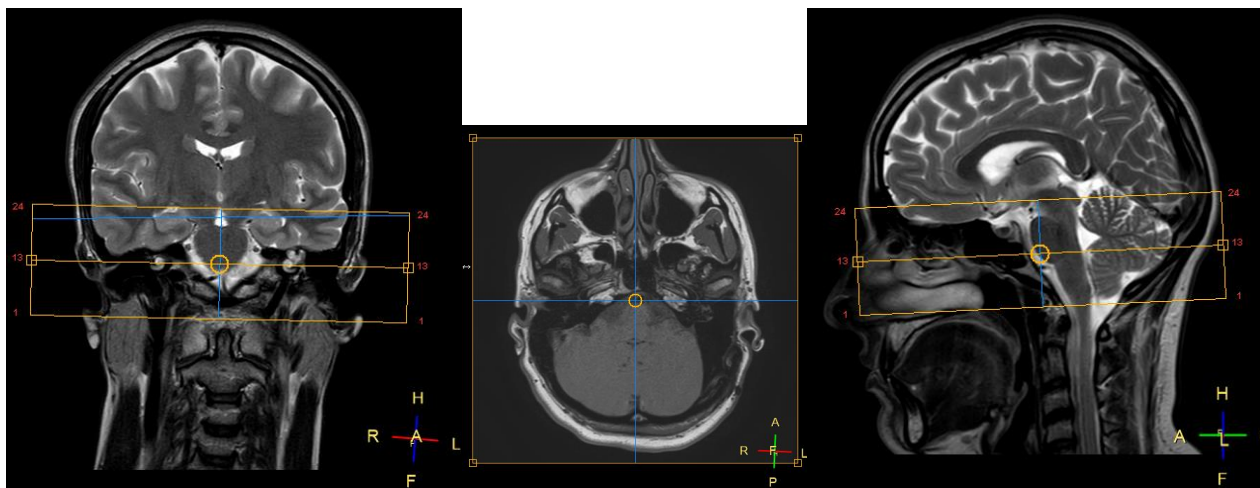


Capitolo 1.d

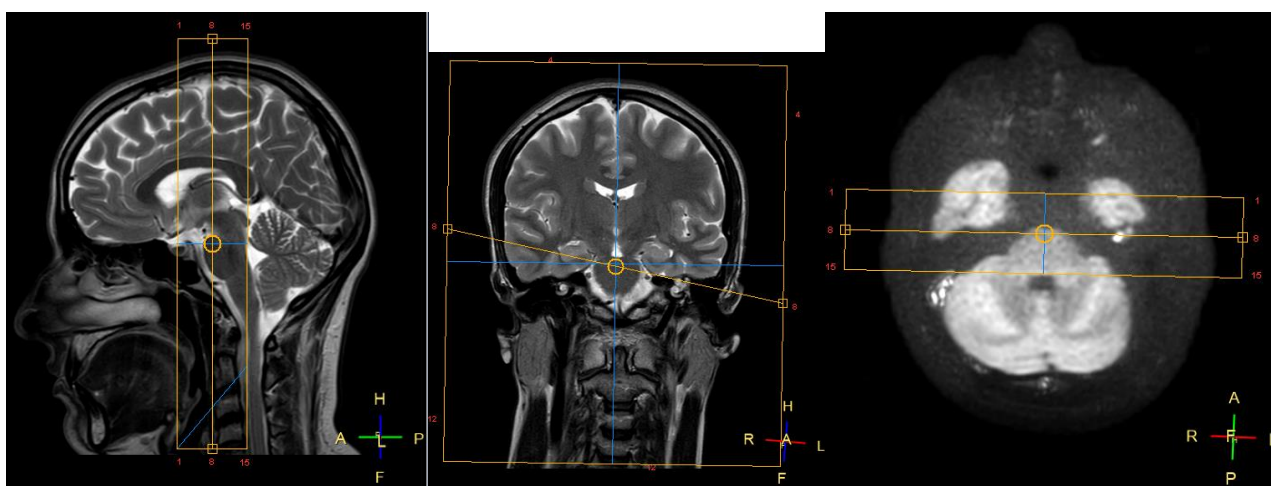
MRI ORECCHIO



Data di aggiornamento: 17 settembre 2022

Impostazione dell'assiale

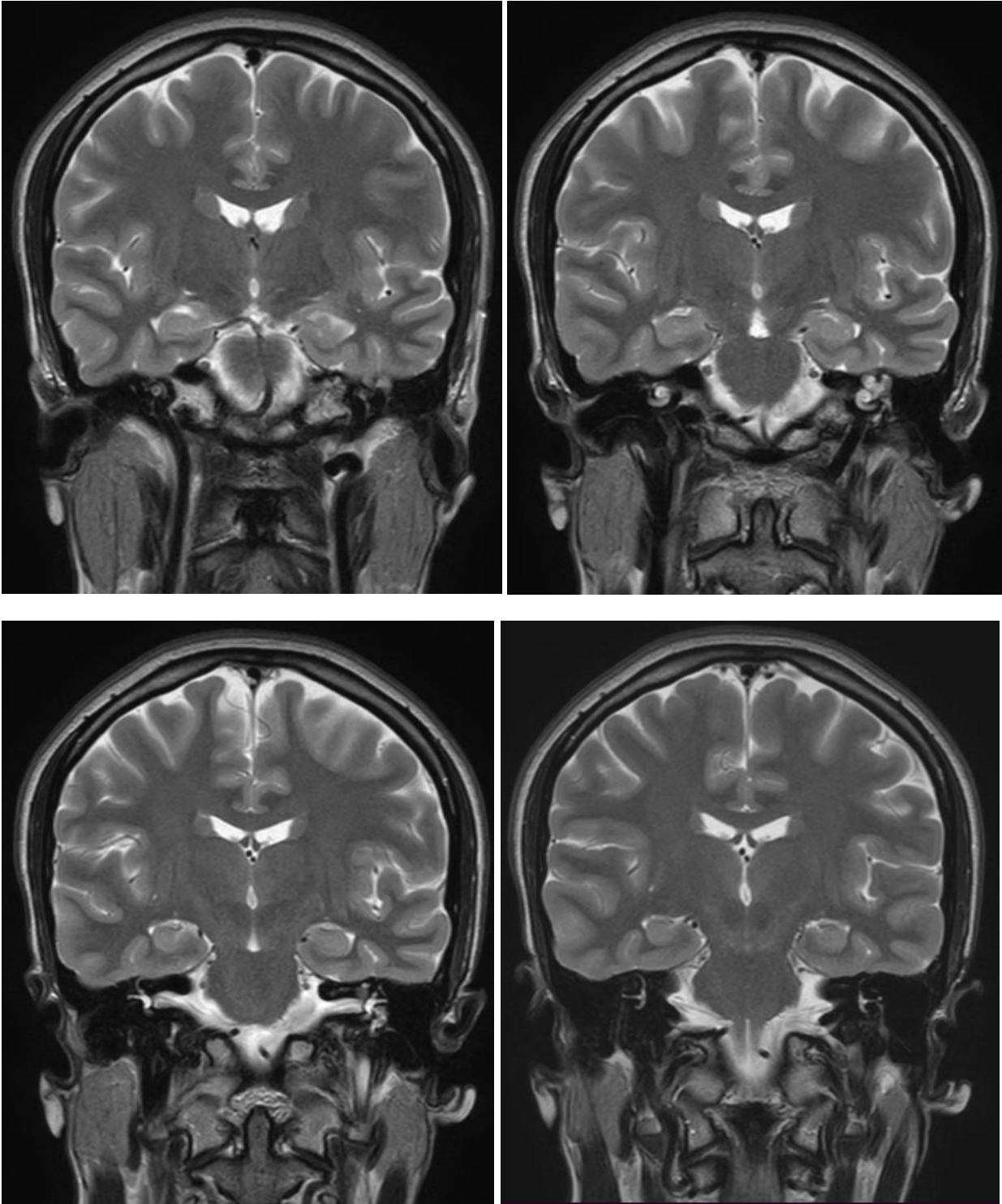


Impostazione della coronale

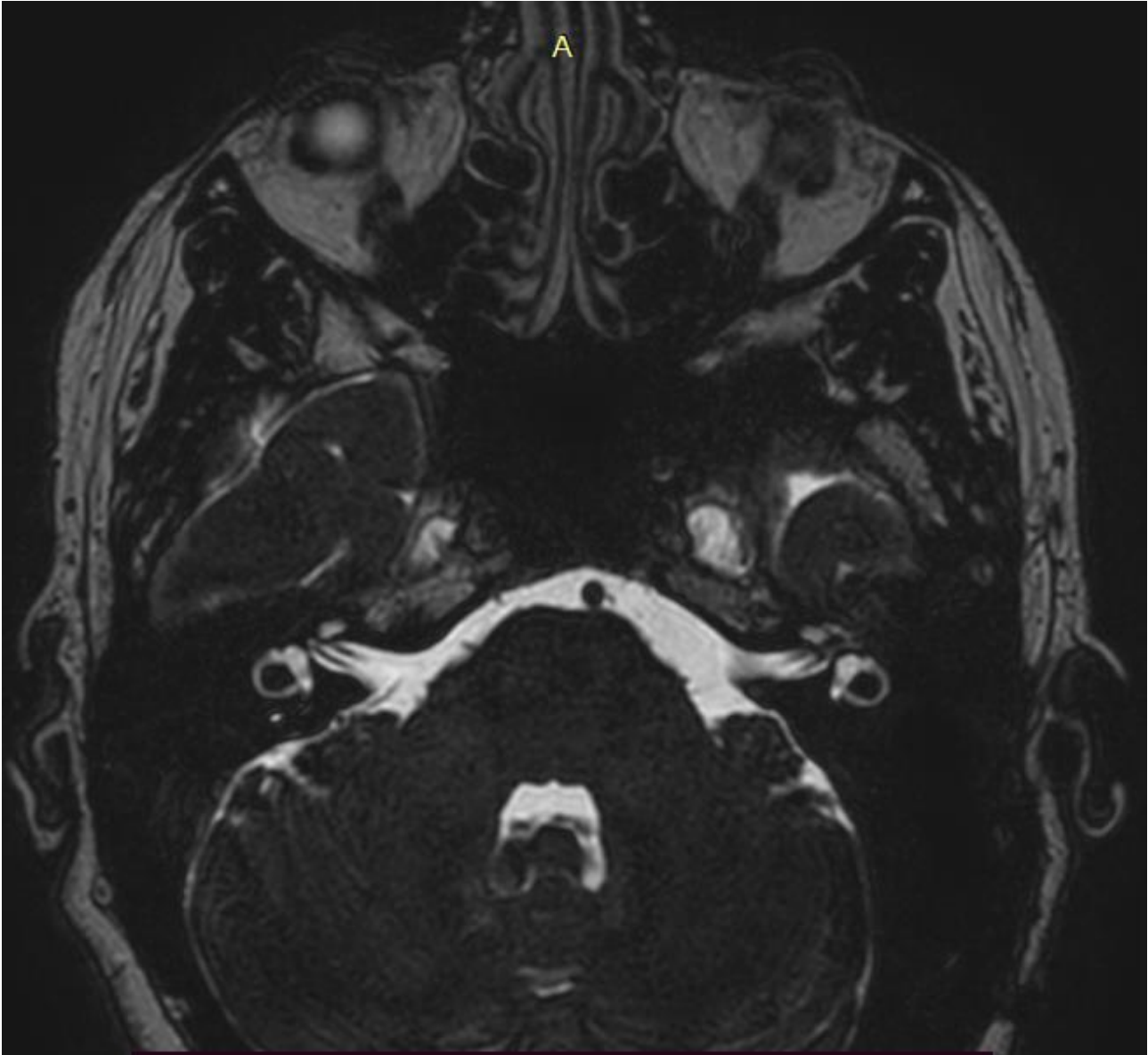


PROTOCOLLO ORECCHIO	
 GE SALA RM1	 PHILIPS RM2
3-Plane	SmartBrain
	AX FLAIR_longTR
	AX DWI
	SAG T2W_TSE
	COR T2W_TSE
	AX SWIp
	AX IAC T1W_TSE 2mm
	AX IAC T2W_TSE 2mm
	AX B_FFE 150 slices
	AX T2W_3D_DRIVE
	AX IAC T2W_mDIXON
	AX sT1W_3D WATS +Mdc
	AX IAC T1W_TSE SPIR + Mdc
	AX T1W_TSE +C
	AX IAC DWI TSE colesteatoma
	COR IAC DWI TSE colesteatoma

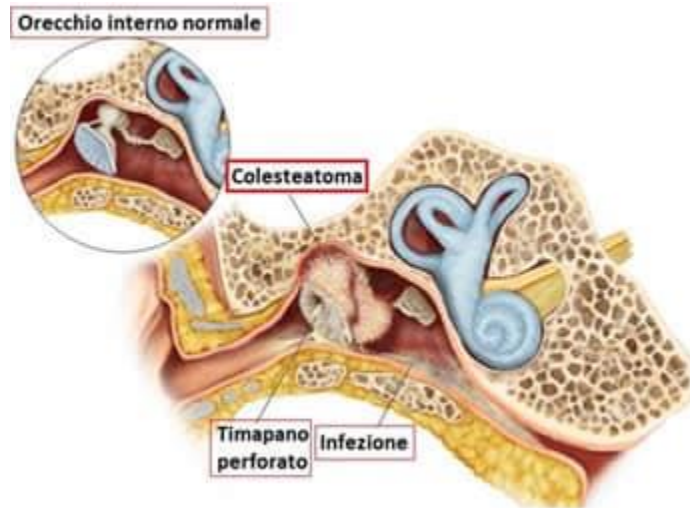
COR T2W_TSE



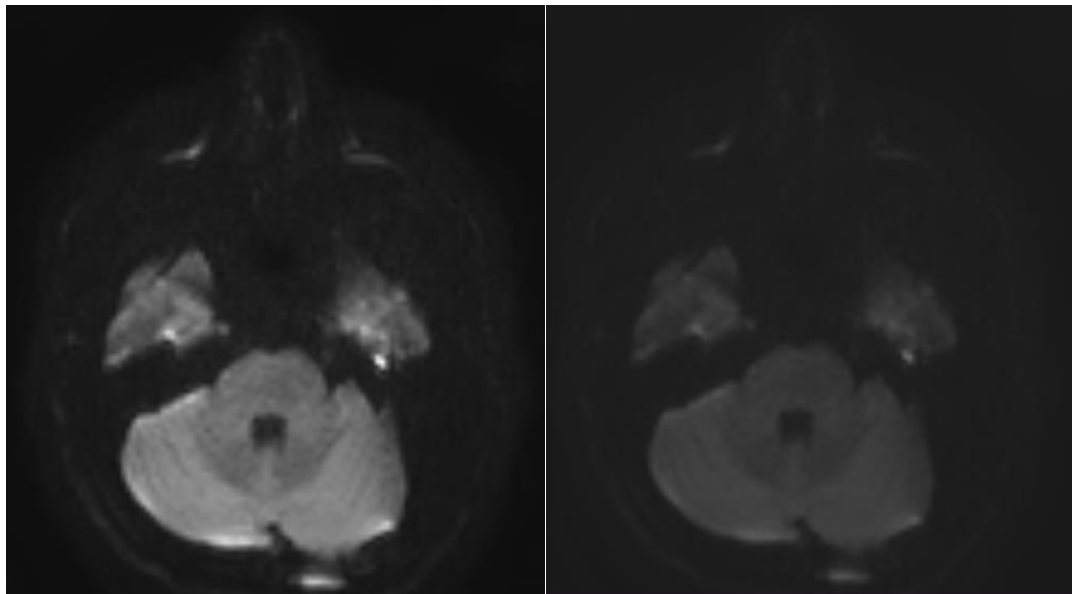
AX T2W_3D_DRIVE



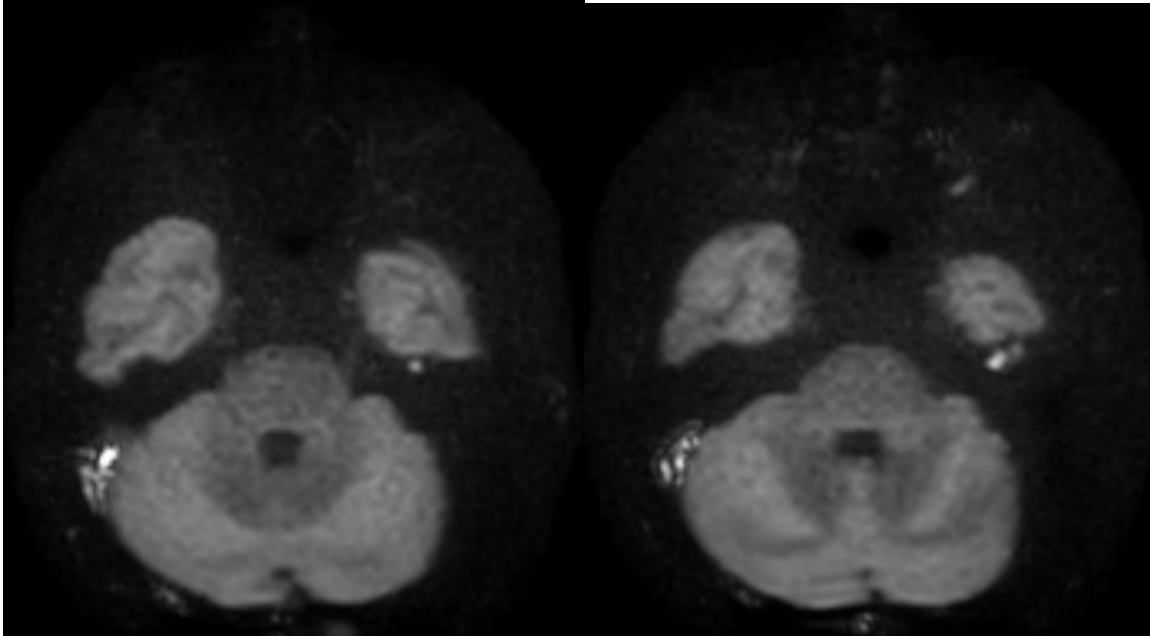
COLESTEATOMA



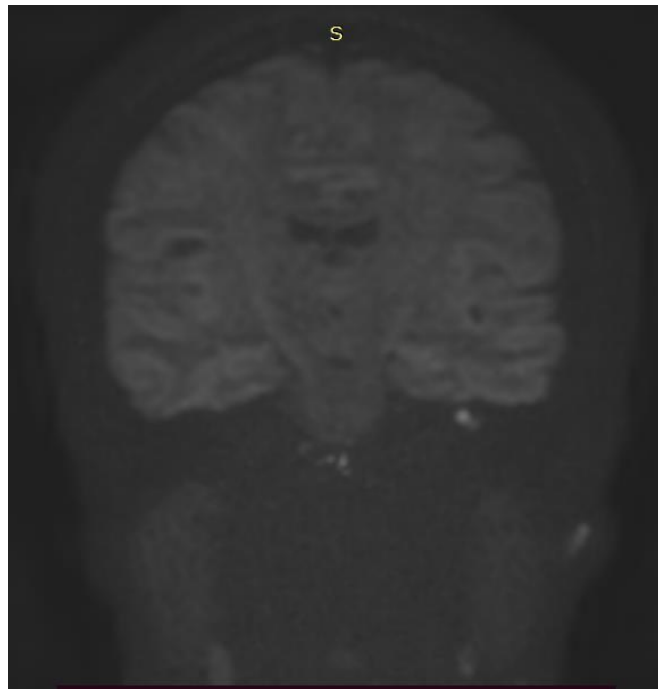
AX DWI EPI



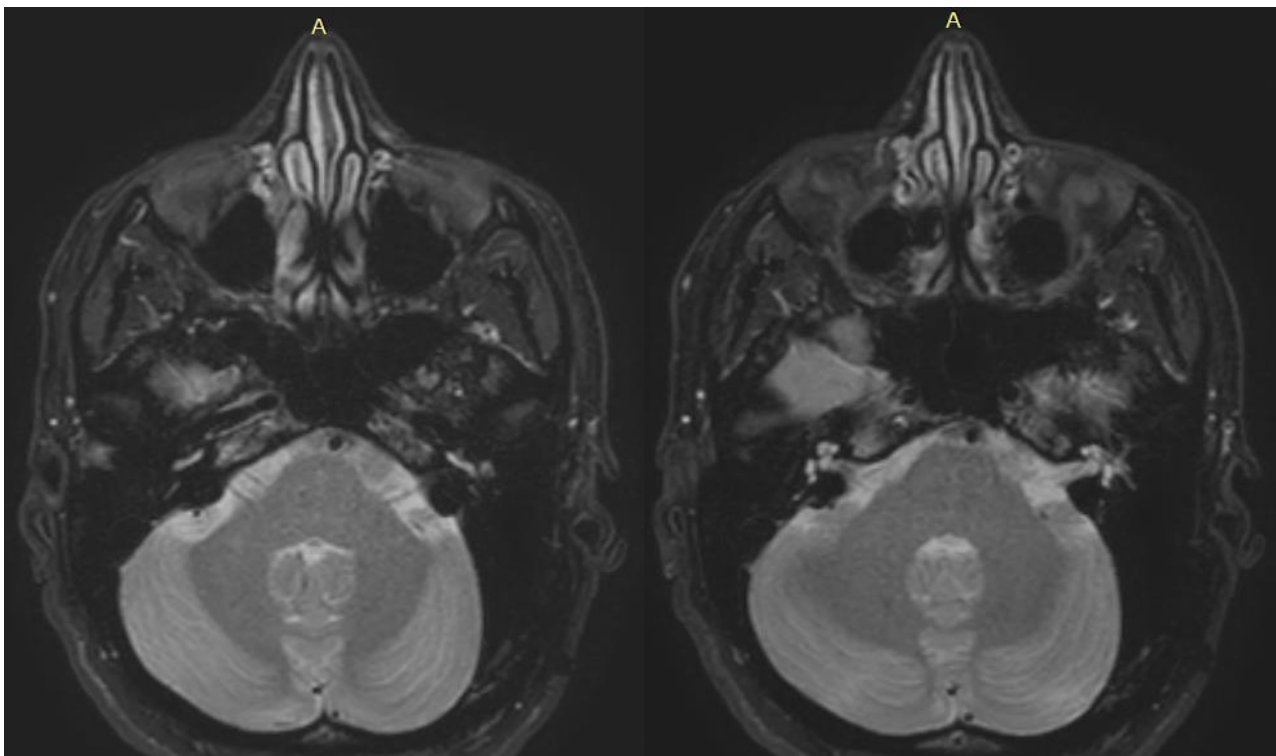
AX DWI TSE

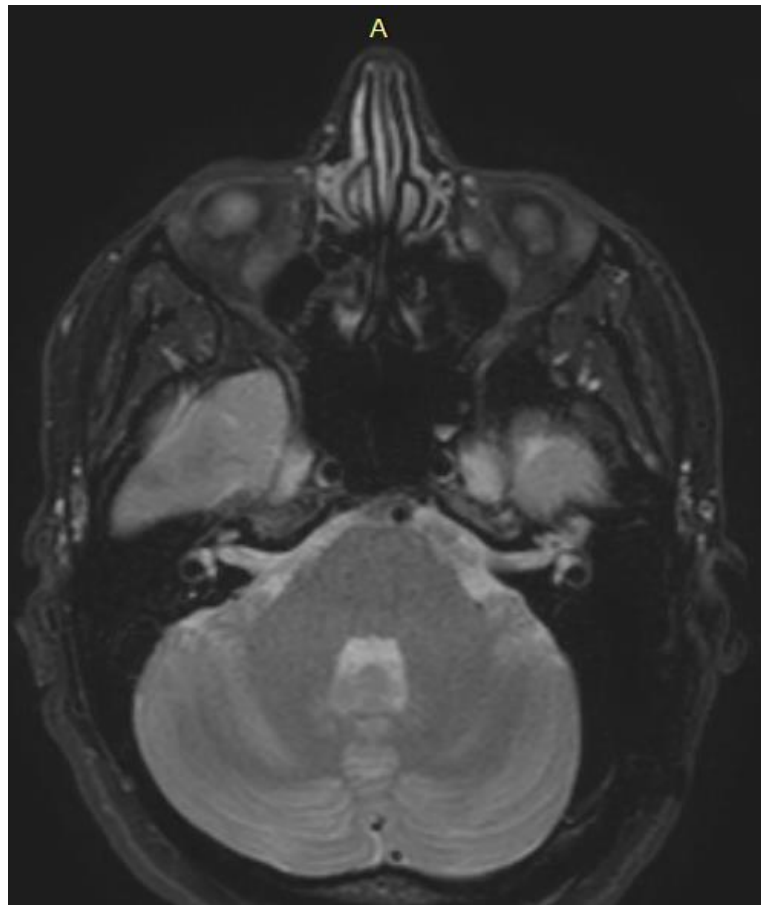


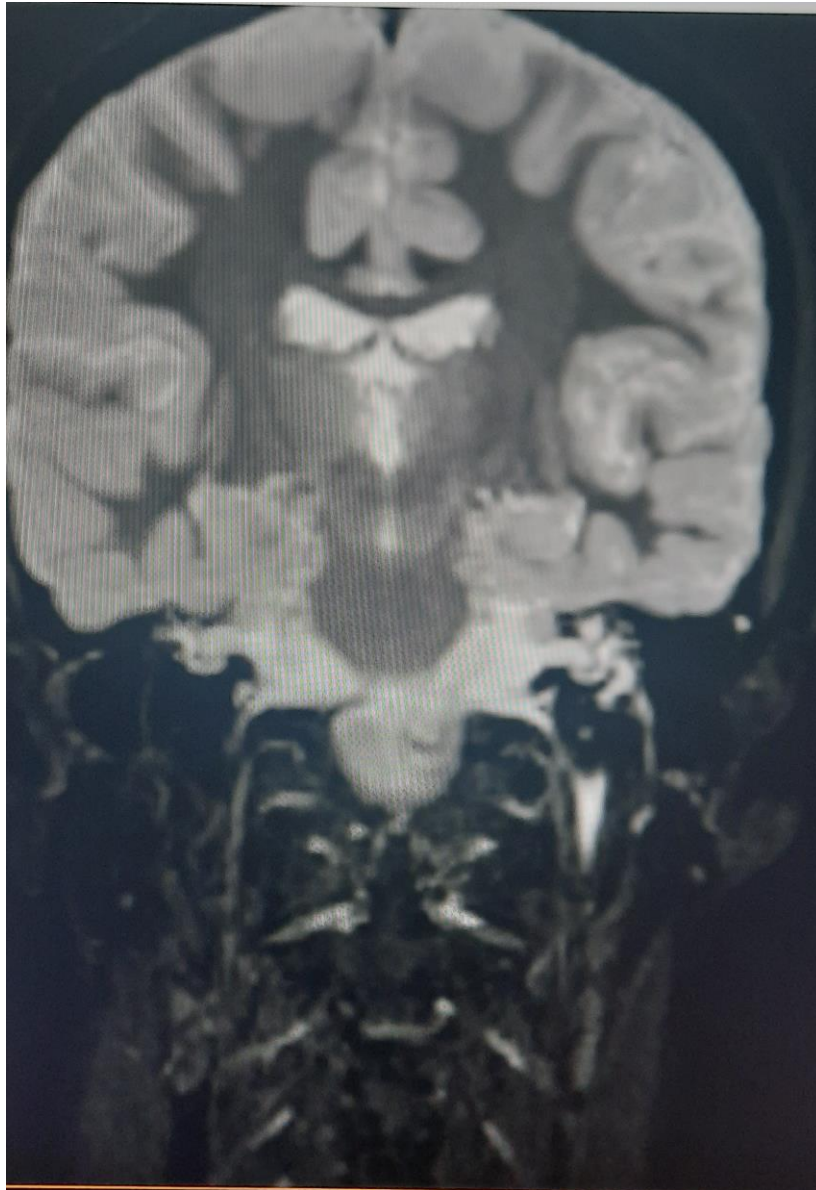
COR DWI TSE



AX T2_mDIXON







Nervo facciale sano



nervo facciale patologico

